

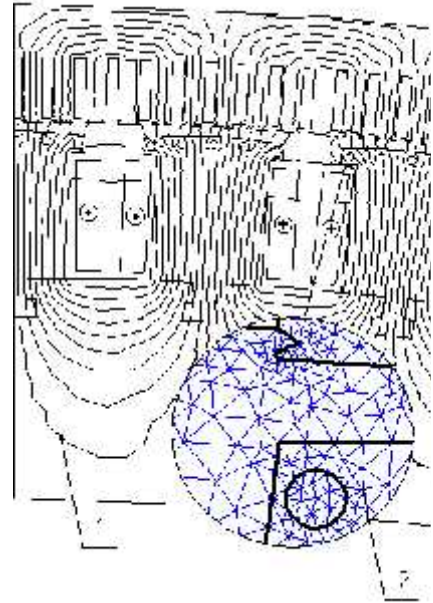
[1]

[1]: $\epsilon=0,261$,
 $\epsilon=0,248$.

[2] $d_s=1,5$
 $m=1,357$,
 $m=1,52$.

[2].

$d_s=1,485$



[1].

.2.
- 1, -
- -2

5...7%,

: 1.

//

.-2006.- 2.- .40-46. 2.

. - .: , -1978.-

832 . 3. Meeker D. Finite Element Method Magnetics. Version 4.0. User's Manual, January 26, 2004 // <http://femm.berlios.de>, 2003.

620. 179. 16

[1].

[2].

().

, .1 .2 [3],

().

(.1)

1 (2-12)

2

2,5.

-

,

3

90

.

3

4

-

5,

6

1

(2-12).

7,

1,

4.

-

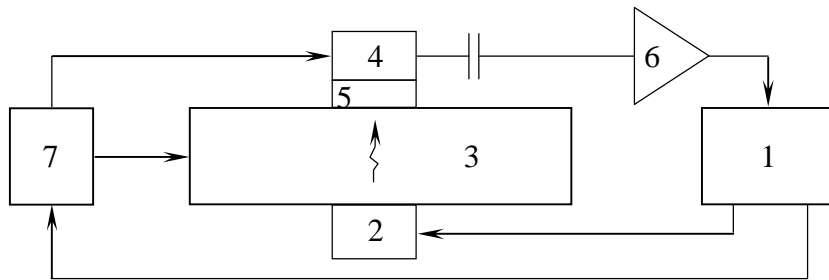
,

-

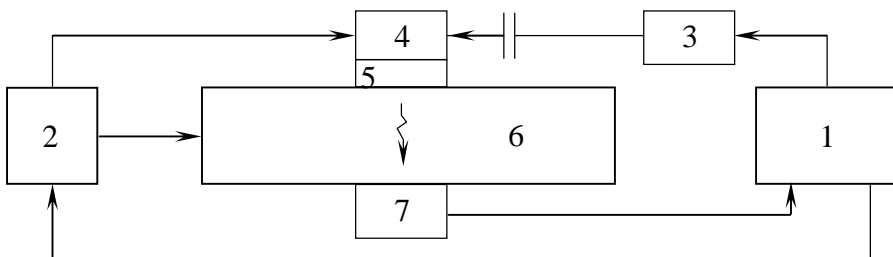
,

-

1.



.1.



.2.

(.2)

1 (2-12)

2

-

3

-

.

2 3

4

5.

4

,

6

.

6

7

1.

,
1.

, .3-5.



.3.

. 4.

ATMEGA 16



. 5.

: 1.

« », 2007, 35, – . 29–32.